



Sun Secure Global Desktop 4.5 User Guide

Sun Microsystems, Inc.
www.sun.com

Part No. 820-6690-10
April 2009, Revision 01

Submit comments about this document at: <http://docs.sun.com/app/docs/form/comments>

Copyright 2007-2009 Sun Microsystems, Inc., 4150 Network Circle, Santa Clara, California 95054, U.S.A. All rights reserved.

Sun Microsystems, Inc. has intellectual property rights relating to technology that is described in this document. In particular, and without limitation, these intellectual property rights may include one or more of the U.S. patents listed at <http://www.sun.com/patents> and one or more additional patents or pending patent applications in the U.S. and in other countries.

U.S. Government Rights - Commercial software. Government users are subject to the Sun Microsystems, Inc. standard license agreement and applicable provisions of the FAR and its supplements.

This distribution may include materials developed by third parties.

Parts of the product may be derived from Berkeley BSD systems, licensed from the University of California. UNIX is a registered trademark in the U.S. and in other countries, exclusively licensed through X/Open Company, Ltd.

Sun, Sun Microsystems, the Sun logo, Solaris, Java, and JavaScript are trademarks or registered trademarks of Sun Microsystems, Inc. or its subsidiaries in the United States and other countries.

All SPARC trademarks are used under license and are trademarks or registered trademarks of SPARC International, Inc. in the U.S. and in other countries. Products bearing SPARC trademarks are based upon an architecture developed by Sun Microsystems, Inc.

Adobe is the registered trademark of Adobe Systems, Incorporated.

Products covered by and information contained in this service manual are controlled by U.S. Export Control laws and may be subject to the export or import laws in other countries. Nuclear, missile, chemical biological weapons or nuclear maritime end uses or end users, whether direct or indirect, are strictly prohibited. Export or reexport to countries subject to U.S. embargo or to entities identified on U.S. export exclusion lists, including, but not limited to, the denied persons and specially designated nationals lists is strictly prohibited.

DOCUMENTATION IS PROVIDED "AS IS" AND ALL EXPRESS OR IMPLIED CONDITIONS, REPRESENTATIONS AND WARRANTIES, INCLUDING ANY IMPLIED WARRANTY OF MERCHANTABILITY, FITNESS FOR A PARTICULAR PURPOSE OR NON-INFRINGEMENT, ARE DISCLAIMED, EXCEPT TO THE EXTENT THAT SUCH DISCLAIMERS ARE HELD TO BE LEGALLY INVALID.

Copyright 2007-2009 Sun Microsystems, Inc., 4150 Network Circle, Santa Clara, Californie 95054, États-Unis. Tous droits réservés.

Sun Microsystems, Inc. détient les droits de propriété intellectuelle relatifs à la technologie incorporée dans le produit qui est décrit dans ce document. En particulier, et ce sans limitation, ces droits de propriété intellectuelle peuvent inclure un ou plus des brevets américains listés à l'adresse <http://www.sun.com/patents> et un ou les brevets supplémentaires ou les applications de brevet en attente aux Etats - Unis et dans les autres pays.

Cette distribution peut comprendre des composants développés par des tierces parties.

Des parties de ce produit pourront être dérivées des systèmes Berkeley BSD licenciés par l'Université de Californie. UNIX est une marque déposée aux Etats-Unis et dans d'autres pays et licenciée exclusivement par X/Open Company, Ltd.

Sun, Sun Microsystems, le logo Sun, Solaris, Java, et JavaScript sont des marques déposées ou enregistrées de Sun Microsystems, Inc. ou ses filiales aux Etats-Unis et dans d'autres pays.

Toutes les marques SPARC sont utilisées sous licence et sont des marques de fabrique ou des marques déposées de SPARC International, Inc. aux Etats-Unis et dans d'autres pays. Les produits portant les marques SPARC sont basés sur une architecture développée par Sun Microsystems, Inc.

Adobe est une marque enregistrée de Adobe Systems, Incorporated.

Les produits qui font l'objet de ce manuel d'entretien et les informations qu'il contient sont regis par la législation américaine en matière de contrôle des exportations et peuvent être soumis au droit d'autres pays dans le domaine des exportations et importations. Les utilisations finales, ou utilisateurs finaux, pour des armes nucléaires, des missiles, des armes biologiques et chimiques ou du nucléaire maritime, directement ou indirectement, sont strictement interdites. Les exportations ou reexportations vers des pays sous embargo des États-Unis, ou vers des entités figurant sur les listes d'exclusion d'exportation américaines, y compris, mais de manière non exclusive, la liste de personnes qui font objet d'un ordre de ne pas participer, d'une façon directe ou indirecte, aux exportations des produits ou des services qui sont régi par la législation américaine en matière de contrôle des exportations et la liste de ressortissants spécifiquement désignés, sont rigoureusement interdites.

LA DOCUMENTATION EST FOURNIE "EN L'ÉTAT" ET TOUTES AUTRES CONDITIONS, DÉCLARATIONS ET GARANTIES EXPRESSES OU TACITES SONT FORMELLEMENT EXCLUES DANS LA LIMITE DE LA LOI APPLICABLE, Y COMPRIS NOTAMMENT TOUTE GARANTIE IMPLICITE RELATIVE À LA QUALITÉ MARCHANDE, À L'APTITUDE À UNE UTILISATION PARTICULIÈRE OU À L'ABSENCE DE CONTREFAÇON.



Adobe PostScript

Contents

Preface vii

1. Using Sun Secure Global Desktop 1

Logging In 1

 User Names and Passwords 1

 ▼ How to Log In to SGD 2

 Potentially Unsafe Connection Message 5

 ▼ How To Deal With a Potentially Unsafe Connection Message 6

The SGD Webtop 6

 Menu Bar 7

 Applications Area 8

 Printing Area 8

 Information Area 8

 User Name 8

 Secure Connection Status 9

Using Applications 9

 Running Applications 9

 Number of Instances of an Application 10

 What If I Get an Error Message When Starting an Application? 11

 Suspending and Resuming Applications 11

Session Toolbars for Controlling an Application	11
Resumability Settings for Applications	12
Do I Lose My Work If I Close My Browser?	13
Changing the Way an Application is Displayed	13
Copying Information Between Applications	14
Running Applications Using a Different User Name and Password	14
Using a Single-Button Apple Macintosh Mouse	15
Printing	15
Managing Your Print Jobs	15
Printing From UNIX Platform Applications	16
Printing from UNIX Platform Applications to UNIX, Linux, or Mac OS X Platform Computers	16
Printing from UNIX Platform Applications to a Windows Computer	17
Printing From Windows Applications	17
Printing from Windows Applications to UNIX, Linux, or Mac OS X Platform Computers	18
Printing from Windows Applications to a Windows Computer	18
PDF Printing	19
Using PDF Printing	19
Printing Troubleshooting	20
Changing Your Settings	20
Client Settings	21
Editing Profiles	21
Application Groups	21
▼ How To Create a Group	22
Using SGD From Your Desktop Start or Launch Menu	23
▼ How to Add SGD to Your Desktop Start or Launch Menu	24
Working With the Start or Launch Menu	24
Logging In	25

Displaying a Webtop	25
Running Applications	26
Printing	26
Using Application Groups	26
Using My Desktop	26
Logging Out	27
Logging Out of the SGD Webtop	27
Logging Out Using the Start or Launch Menu	27
A. Installing the SGD Client Manually	29
Installing the SGD Client	29
▼ How to Install the SGD Client Manually on Microsoft Windows Platforms	30
▼ How to Install the SGD Client Manually on Solaris OS and Linux Platforms	31
Logging In Using the SGD Client	32
▼ How to Configure the SGD Client	32
B. Advanced Configuration	35
Client Settings	35
Changing the Login Page URL	36
Changing the Language	36
Changing Proxy Settings	36
Specifying an Alternative PDF Viewer	36
Printing	37
Configuring Your Client Printers	37
Accessing the Drives on Your Computer	38
C. Profile Settings	39
Description of Profile Settings	39
Configuring Integrated Mode Operation	41

Glossary 43

Index 47

Preface

The *Sun Secure Global Desktop 4.5 User Guide* provides an introduction to using Sun Secure Global Desktop software (SGD). The manual provides information on how you can use SGD to run applications. This document is intended for both new and existing users of SGD.

How This Book Is Organized

[Chapter 1](#) describes how to use SGD to run applications from your computer.

[Appendix A](#) describes how to install the SGD Client manually on your computer.

[Appendix B](#) discusses configuration settings for advanced users of SGD.

[Appendix C](#) describes the available profile settings.

A [Glossary](#) of words and phrases and their definitions is also included.

Related Documentation

The following table lists the documentation for this product. The online documentation is available at:

Application	Title	Part Number	Format	Location
Release Notes	<i>Sun Secure Global Desktop 4.5 Release Notes</i>	820-6687-10	HTML	Online
			PDF	Software CD and online
Installation	<i>Sun Secure Global Desktop 4.5 Installation Guide</i>	820-6688-10	HTML	Online
			PDF	Software CD and online
Administration	<i>Sun Secure Global Desktop 4.5 Administration Guide</i>	820-6689-10	HTML	Online
			PDF	
User	<i>Sun Secure Global Desktop 4.5 User Guide</i>	820-6690-10	HTML	Online
			PDF	
Proxy Server	<i>Sun Secure Global Desktop 4.5 Gateway Administration Guide</i>	820-6691-10	HTML	Online
			PDF	

Third-Party Web Sites

Sun is not responsible for the availability of third-party web sites mentioned in this document. Sun does not endorse and is not responsible or liable for any content, advertising, products, or other materials that are available on or through such sites or resources. Sun will not be responsible or liable for any actual or alleged damage or loss caused by or in connection with the use of or reliance on any such content, goods, or services that are available on or through such sites or resources.

Sun Welcomes Your Comments

Sun is interested in improving its documentation and welcomes your comments and suggestions. You can email your comments to Sun at:

docfeedback@sun.com

Please include the following document title and part number in the subject line of your email:

Sun Secure Global Desktop 4.5 User Guide, part number 820-6690-10.

Using Sun Secure Global Desktop

Sun Secure Global Desktop software (SGD) provides you with secure, remote access to desktop applications running on application servers.

You can be writing a report on a computer in the office, administering UNIX® platform servers on your PC at home, or checking stock databases with a laptop on the train, SGD enables you do all this.

SGD also enables you to run applications over a secure network connection to safeguard corporate and private data.

With SGD, you access all the applications that you can run from a single place, the webtop.

To access a webtop, all you need is a browser with Java™ technology enabled.

This manual guides you through the basics of using SGD. It describes how to log in and log out of the software, as well as how you can use SGD to run applications.

Logging In

This section describes how to log in to SGD and display the SGD webtop.

User Names and Passwords

When you use SGD, you need to know your user name and password for the following servers:

- The SGD server
- The application servers that run your applications

The following table describes the user names and passwords you might require when using SGD.

User Name and Password	Description
SGD server	<p>When you log in to SGD, you need to type a user name and password so that the SGD server knows who you are and can display your webtop. You do not need to type this password again until the next time you log in to SGD.</p> <p>You might also be able to log in to SGD anonymously, that is, without typing a user name and password.</p>
Application servers	<p>When you start an application, you might need to supply a password for the application server that runs it. The SGD server can remember these passwords, so you do not need to type them every time. Use the Save This Password option, if available, when you type your user name and password.</p> <p>If you want to use a different user name and password to run an application, you can force SGD to prompt you.</p>

▼ How to Log In to SGD

Before you log in to SGD, ensure that the following requirements are met:

- JavaScript™ software is enabled in your browser
- Java technology is enabled in your browser

Note – If Java technology is not enabled in your browser, you can download the SGD Client program to your computer. See [“Installing the SGD Client”](#) on page 29 for more details.

- You have a user name and password for the SGD server. Contact your SGD Administrator if you do not know your user name and password.
- You know the login Uniform Resource Locator (URL) for the SGD server. Contact your SGD Administrator if you do not know the URL for the SGD login page.

1. Using your browser, go to the SGD login URL.

The SGD login URL is usually `http://server.example.com/sgd`, where `server.example.com` is the name of the SGD server.

Note – If Java technology is not enabled in your browser, a warning message is shown. You must enable Java technology in your browser before proceeding.

The SGD Login dialog box is shown. See [FIGURE 1-1](#).

FIGURE 1-1 SGD Login Dialog Box

The image shows a login dialog box for Sun Secure Global Desktop. It has a blue and white background with a brown header bar containing the text "Sun Secure Global Desktop". Below the header, there are two input fields: "Username" and "Password". At the bottom left is the Sun Microsystems logo, and at the bottom right is a "LOGIN" button.

Note – If JavaScript is not enabled in your browser, a warning message is displayed beneath the login dialog box.

2. Type in your SGD user name and password.
3. Click the Login button.

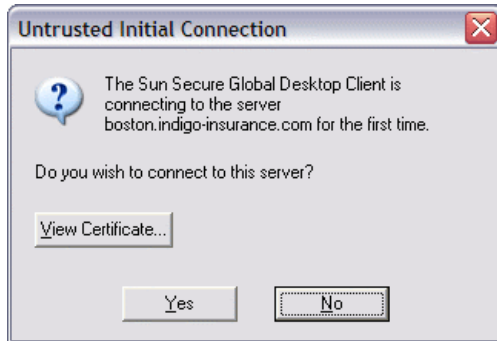
While SGD is starting up, the splash screen is shown. See [FIGURE 1-2](#).

FIGURE 1-2 SGD Splash Screen



The Initial Connection dialog box is shown. This is a security message that is shown the first time you connect to an SGD server. See [FIGURE 1-3](#).

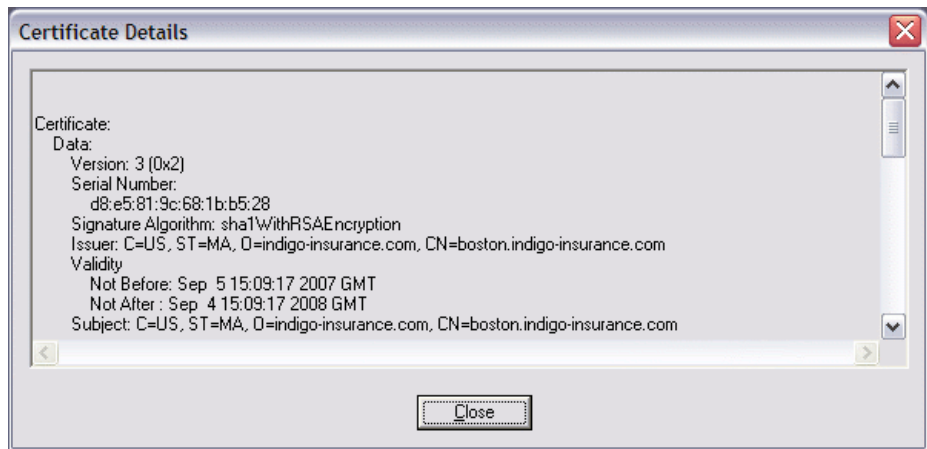
FIGURE 1-3 Initial Connection Dialog Box



4. (Optional) Click the View Certificate button.

The Certificate Details dialog box is shown. This screen enables you to view security certificate details, to ensure that the server you are connecting to can be trusted. See [FIGURE 1-4](#).

FIGURE 1-4 Certificate Details Dialog Box



- a. Check that the **Validity** and **Subject** fields are correct.
- b. Click **Close**.

The Initial Connection dialog box is redisplayed.

5. If the certificate details are correct, click Yes to agree to the connection.

Once you have clicked Yes, you do not see the security message again unless there is a problem with the connection.

The SGD Client icon is displayed in the task bar, as shown in [FIGURE 1-5](#).

FIGURE 1-5 SGD Client Task Bar Icon

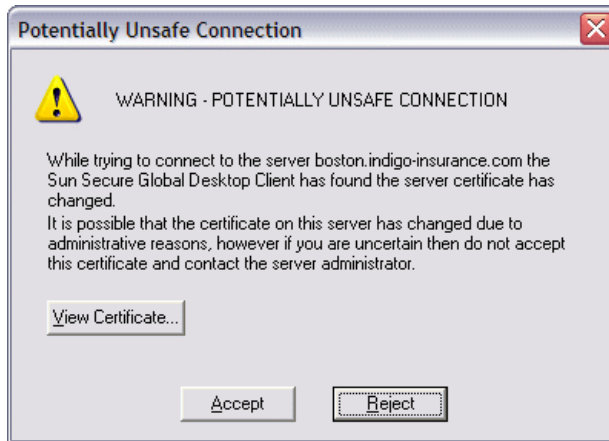


The SGD webtop is displayed. See [FIGURE 1-7](#).

Potentially Unsafe Connection Message

If there is a security problem with the connection to the SGD server, a Potentially Unsafe Connection message is displayed, as shown in [FIGURE 1-6](#).

FIGURE 1-6 Potentially Unsafe Connection Message



If you see a Potentially Unsafe Connection message, do the following.

▼ How To Deal With a Potentially Unsafe Connection Message

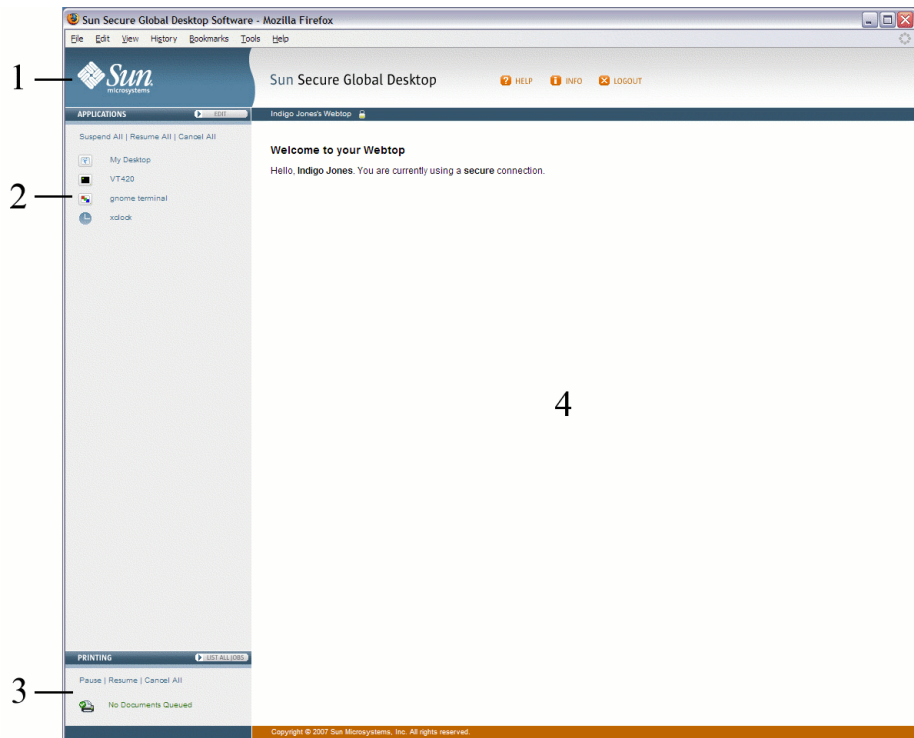
1. Click the **View Certificate** button and make a note of the certificate details.
2. Click the **Reject** button to cancel the connection and contact your **SGD Administrator**.

The SGD Webtop

Your webtop is a special web page that lists the applications you can run through SGD and enables you to run them.

FIGURE 1-7 shows the different areas of the webtop.

FIGURE 1-7 SGD Webtop



#	Name	Description
1	Menu bar	Includes Logout, Help, and Info buttons
2	Applications area	Lists the applications that you can run
3	Printing area	Enables you to manage your print jobs
4	Information area	Displays error messages and system information


The different areas of the webtop are described in the following sections.

Menu Bar

This area of the webtop includes buttons for logging out and for displaying help and diagnostics information.

See “[Logging Out](#)” on page 27 for more information about logging out of SGD.

From the webtop, you can display a page containing diagnostics information. This is useful if you need to contact Support.

Click the Info button  INFO on your webtop and then click the Detailed Diagnostics link in the Information area.

Applications Area

The Applications area of the webtop is used to display the list of applications that you can run through SGD.

See [“Using Applications” on page 9](#) for more information about running applications.

Only an SGD Administrator can add an application to, or remove an application from, the list of applications that you can run. If you want more applications, contact an SGD Administrator. However, you can choose how and when your applications display on your webtop. You do this by creating webtop groups. See [“Application Groups” on page 21](#).

Printing Area

The Printing area of the webtop includes links that enable you to list and control your print jobs.

See [“Printing” on page 15](#) for more information about printing.

Information Area

The Information area is used to display error messages and system information. The information displayed includes the following:

- User name
- Secure connection status

User Name

Your SGD user name is displayed on the webtop toolbar, next to the padlock symbol, as shown in [FIGURE 1-8](#).


FIGURE 1-8 User Name Displayed on the Webtop Toolbar



If the toolbar says you are logged in as “Guest user” then you either logged in without typing a user name and password, known as an anonymous login, or you are using a webtop that is shared with other users.

These details also display on the webtop when you first log in.

Secure Connection Status

If you have a secure connection, the locked padlock symbol  is displayed below the webtop menu bar. Also, when you first log in, the page that is displayed on the webtop tells you whether you have a secure or a standard connection.

Secure connections to SGD are available only if an SGD Administrator has enabled them.

You might not automatically receive a secure connection, or you might only get a secure connection under certain circumstances. Contact your SGD Administrator if you do not get a secure connection when you need one.

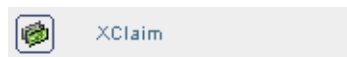
Using Applications

Use the Applications area of the webtop to start, stop, and manage your applications.

Running Applications

To start an application, you click its link on your webtop, as shown in [FIGURE 1-9](#). In a few moments the application is shown, ready for you to use.

FIGURE 1-9 Webtop Link for Running an Application



When you start an application, you might be asked for a user name and password. This is your user name and password for the application server that runs the application.

You do not have to exit an application before starting another. Just click another link. SGD Administrators configure how the applications display.

Note – You cannot start a Windows application using a different Windows domain name. Ask an SGD Administrator to do this for you.

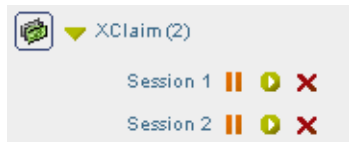
If you have difficulties, contact your SGD Administrator.

You can also run your applications using links in the desktop Start or Launch Menu. See [“Using SGD From Your Desktop Start or Launch Menu” on page 23](#) for more details.

Number of Instances of an Application

When an application is running, a triangle appears in front of the application’s name on the webtop and a number appears in brackets after it. The session toolbar also appears below the application name. The session toolbar is used to suspend, resume, or end an application. [FIGURE 1-10](#) shows the webtop link when two instances of an application are running.

FIGURE 1-10 Webtop Link When the Application is Running



The number in brackets is the number of separate instances of the application that you have started. SGD Administrators configure how many instances of an application you can start. To find out how many instances of an application you are allowed, point to its link on the webtop. The popup that is displayed states the number of sessions allowed.

See [“Suspending and Resuming Applications” on page 11](#) for more details.

What If I Get an Error Message When Starting an Application?

If an error message is shown when you click a link to start an application, try one of the following:

- Make sure you supplied the correct user name and password for the application server. If SGD does not prompt you for this information, hold down the Shift key and click the link to force the prompt to appear.
- Log out of SGD and exit your browser, then restart it and log in to SGD again. Click the application's link.
- Contact an SGD Administrator, supplying all the information shown in the error message.

Suspending and Resuming Applications

Some applications can be configured to keep running, even when they are not displayed. These are “resumable” applications.




To close an application's window without ending the application, you *suspend* the application. To display the window again and start using the application, you *resume* the application.

As an application is still running even though it is not displayed, you can start writing an urgent report in the office and then log out of SGD at the end of the day. The application is suspended. When you get home, you can log in to SGD again, resume the application and carry on writing the report.

Suspending and resuming applications is done using the session toolbars on the webtop.

Session Toolbars for Controlling an Application

There is a separate session toolbar for each running instance of the application:

- Click  to suspend an application
- Click  to resume an application
- Click  to end an application

Click the triangle to hide and show the session toolbars for the application sessions, as shown in [FIGURE 1-11](#).

FIGURE 1-11 Session Toolbar when Hidden

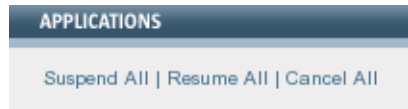


You can manage all your application sessions at once, using the following links at the top of the Applications area:

- Click the Suspend All link to suspend all running applications

- Click the Resume All link to resume all suspended applications
- Click the Cancel All link to end all running or suspended applications

FIGURE 1-12 Links for Managing All Application Sessions



Resumability Settings for Applications

To see if an application is resumable or not, point to its link on your webtop and look at the popup window that is displayed.

The available resumability settings for an application are described in the following table.

Resumability Settings	Description
Not Resumable	This application exits when you log out of SGD. You cannot suspend or resume non-resumable applications. Note - Non-resumable applications only have a Cancel button in the session toolbar.
Resumable Until Log Out	This application continues running until you log out of SGD. While you are logged in, you can suspend and resume these applications.
Always Resumable	This application continues running even after you have logged out of SGD. When you log in again, click the Resume button to display the running application again.

Note – If you log in to SGD without typing a user name and password, resumable applications are only resumable until you log out.

Do I Lose My Work If I Close My Browser?

No, you do not lose any work if you accidentally close your browser without logging out, or if your browser crashes. You can restart your browser and log in to SGD to display your webtop.

However, if the SGD Client exits unexpectedly, or if you close down the SGD Client, your ability to resume an application depends upon how your SGD Administrator configured the application and how you logged in to SGD.

- If an application is configured to be “Not Resumable”, then it exits when the SGD Client exits or is closed down. Typically, applications are configured to be Not Resumable if they are used only for short periods at a time, and are not business-critical functions.
- Applications configured to be “Always Resumable”, or “Resumable Until Log Out”, continue to run for a period of time after an SGD Client exits or is closed down. Simply restart your browser, log in to SGD again and resume the applications that are still running.
- If you logged in to SGD anonymously, in other words you did not supply a user name and password, or you are using a shared webtop, where more than one person logs in using the same user name and password, then your applications exit if the SGD Client exits or is closed down. In both cases, the reason for this is that SGD cannot tell when you log in to SGD again that you are the same user as before, because you are not using a unique user name and password. See also [“User Name” on page 8](#).

Changing the Way an Application is Displayed

Your SGD Administrator defines how an application is displayed on your desktop. For example, if the application is displayed full-screen or in a desktop window.

A graphical application that is displayed in a desktop window can be scaled to fit the size of the window. If you resize the window, SGD rescales the application to fit the new window size, without displaying any scroll bars.

You can switch the application between being scaled and not being scaled by pressing the Scroll Lock key.

To see if an application is displayed in a scalable window, point to its link on your webtop and look at the popup that is shown. Alternatively, look in the status bar at the bottom of the window.

Copying Information Between Applications

For *Windows applications and X applications*, use the normal method for the application you are copying from, and then the usual method for the application you are pasting to. You might not be allowed to copy and paste information from particular applications. This is configured by your SGD Administrator. If you are not allowed to copy and paste between an application, the following message is pasted instead of the information you copied:

Sun Secure Global Desktop Software: Copied data not available to this application

For *character applications*, click with the right mouse button, and then click Copy or Paste as appropriate. To select a column of text, hold down the Shift key while selecting the text.

You can copy information between different types of application, for example from an xterm running on an application server to a text editor running on your computer.

You can only copy and paste *graphics* to or from Windows applications.

Running Applications Using a Different User Name and Password

To force SGD to prompt you for a user name and password when you start an application, hold down the Shift key when you click the application's link on your webtop.

Forcing SGD to prompt you for a user name and password in this way means that SGD does not use any user name and password that has already been saved for the application server. This is useful if you want to run an application as another user.

If the Save This Password check box is selected, the new user name and password are saved, replacing any previously saved user name and password for you on this application server. This user name and password is used for any other applications you run on this application server.

Holding down the Shift key has no effect in the following cases:

- When you are logged in to SGD anonymously, or as a shared user.
- When the link for starting an application is in your desktop Start or Launch Menu. The Shift key prompt only works for links on a webtop.

Using a Single-Button Apple Macintosh Mouse

Many Microsoft Windows applications and X applications make use of a middle mouse button or a right mouse button. To use these applications from an Apple Macintosh mouse with one button, click the button while holding down one of the following keys on the keyboard:

- To simulate a *middle* mouse button click, press Alt while clicking the mouse button

- To simulate a *right* mouse button click, press Command while clicking the mouse button

Printing

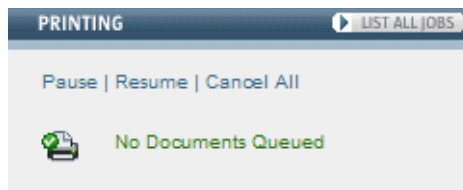
SGD enables you to print from your applications to a printer attached to your computer.

Usually, you can choose the printer you want to print to. However, for some applications you might only be able to print to your default printer.

Managing Your Print Jobs

You use the Printing area of the webtop to manage your print jobs. The Printing area shows the number of jobs currently in the print queue and includes controls for managing your print jobs, as shown in [FIGURE 1-13](#).

FIGURE 1-13 Printing Area of the SGD Webtop



When documents are printing, the webtop tells you how many print jobs are in the queue.

Click the Pause link to temporarily stop printing. The printer icon changes to show you when printing is paused, as shown in [FIGURE 1-14](#).

FIGURE 1-14 Printing Paused Icon




If you pause printing, any print jobs that are pending are held in a queue until you either cancel them or resume printing.

Click the Resume link to start printing again after you have paused printing.

Click the Cancel All link to delete all your print jobs.

To manage print jobs individually, click the List All Jobs button. The webtop displays a list of all the print jobs in the queue, along with information about the job. For example, the number of copies and the printer to use.

If you have paused printing, click  to print just that one print job.

To cancel a print job, click .

Printing From UNIX Platform Applications

SGD enables you to print from UNIX platform applications to a printer attached to your computer.

Printing from UNIX Platform Applications to UNIX, Linux, or Mac OS X Platform Computers

From a terminal window on the application server, you can print a file to your default printer by typing the following command:

```
$ lp file
```

Alternatively, you can specify any client printer that your SGD Administrator has configured.

For example, if a client printer named `salesprinter` has been configured by your SGD administrator, you can use the following command:

```
$ lp -d salesprinter file
```

Printing from UNIX Platform Applications to a Windows Computer

The following command prints *file* to your default printer on the Windows computer:

```
$ lp file
```

You can also print to a port on the computer. For example:

```
$ lp -d LPT1: file
```


You can also print by specifying the universal naming convention (UNC) name of a network printer that is accessible from the computer. To use a UNC name, you must enclose the printer name in quotes and escape backslashes as appropriate for the shell. For example:

```
$ lp -d '\\\\PRTSERVER\HPLJ5' file
```

To avoid problems with UNC names, you can print using a “friendly” name such as:

```
$ lp -d label-printer file
```

In this case, the friendly name must be configured by your SGD Administrator.

Printing From Windows Applications

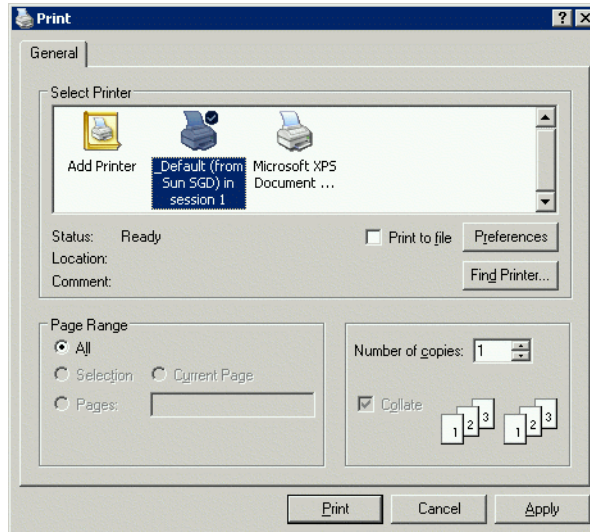
SGD enables you to print from Windows applications to a printer attached to your computer.

Printing from Windows Applications to UNIX, Linux, or Mac OS X Platform Computers

If you print from a Microsoft Windows application to a UNIX, Linux, or Mac OS X platform computer, you see the client printers that have been configured by your SGD Administrator.

In the application server’s Print dialog box, the printers on your computer are designated by “Sun SGD” in the printer name, as shown in [FIGURE 1-15](#).

FIGURE 1-15 Microsoft Windows Print Dialog Box, With an SGD Client Printer Selected



See “[Configuring Your Client Printers](#)” on page 37 for more information on how you can configure your own client printers.

Printing from Windows Applications to a Windows Computer

If you print from a Microsoft Windows application to a Microsoft Windows computer, you see some, all, or none of the printers that are attached to the client and also the printers that are attached directly to the application server. The SGD Administrator configures the client printers you can see.

In the application server’s Print dialog box, the printers on your client are designated by “Sun SGD” in the printer name, as shown in [FIGURE 1-15](#).

PDF Printing

With SGD you can also use Portable Document Format (PDF) printing. This avoids many problems with print drivers by using the Adobe PDF format.

SGD has two PDF printers: *Universal PDF Printer* and *Universal PDF Viewer*.

On Microsoft Windows computers, the Universal PDF Printer printer displays the print job as a PDF file in Adobe Reader, which then prints the PDF file to your default printer. The Universal PDF Viewer printer displays the print job as a PDF file in Adobe Reader. You can then decide whether to print or save the PDF file.

On UNIX, Linux, and Mac OS X platform computers, there is no difference between the Universal PDF Printer and Universal PDF Viewer printers, as the print job is always displayed as a PDF file in a PDF viewer. You can then decide whether to print or save the PDF file.

Using PDF Printing

From a Windows application, you print in the normal way and select either the Universal PDF Printer or the Universal PDF Viewer printer in the application's Print dialog box.

From an application running on a UNIX or Linux platform application server, you print in the normal way, specifying a PDF printer as part of the print command. For example:

```
$ lp -d "Universal PDF Printer" file
```

```
$ lpr -P "Universal PDF Viewer" file
```

The *file* must be a PostScript file, so the application must be able to output PostScript.

On Windows computers, the PDF file is displayed in the Adobe Reader. Depending on the printer you select, either of the following applies:

- If the Universal PDF Printer printer is selected, the PDF file is printed automatically to your default printer. The Adobe Reader runs minimized and does not exit when the print job has finished.
- If the Universal PDF Viewer printer is selected, the PDF file is displayed in the Adobe Reader window. You can then decide whether to print or save the file.

On UNIX, Linux, and Mac OS X platform computers, the PDF file is displayed in a PDF viewer. You can then decide whether to print or save the PDF file. There is no difference between the Universal PDF Printer and the Universal PDF Viewer printers, as the print job is always displayed in a PDF viewer.

Printing Troubleshooting

If you print from an application and the output does not appear, check the following.

Possible Cause	More Information
Have You Paused Printing?	Make sure that your webtop indicates that printing is not paused. See “Printing Paused Icon” on page 16.
Is Your Printer Set Up Correctly?	Make sure your printer is set up correctly. For example, by printing a web page to the printer from a browser.
Have You Printed To the Correct Printer?	You can choose a printer to print to. If you do not select a printer, output is sent to your default printer. To see which printer is your default printer, point to the printer icon on your webtop. A popup shows the name of your default printer. If you want to change your default printer, you must log out of SGD, change the default printer, then log in to SGD again.
Is the Message “No Client Printer Available” Displayed?	Make sure that your webtop does not display a “No Client Printer Available” message and that the printer icon does not contain a red X. This means that SGD does not support printing for your computer or for your printer. Your SGD Administrator might be able to help enable printing.

If none of the above solves your printing problem, contact your SGD Administrator.

Changing Your Settings

You can configure the following settings by clicking on the Edit button in the Applications area:

- Client settings
- Application Groups

Client Settings

Each time the SGD Client starts it uses a profile. A profile is a group of configuration settings that control the SGD Client. The settings in a profile define the following:

- How the SGD Client connects to an SGD server. For example, the URL to connect to and the proxy server to use.
- **The operating mode of the SGD Client.** For example, whether to display a webtop or whether the list of applications that you can run is displayed in the desktop Start or Launch Menu, known as Integrated mode.
- How the SGD Client behaves. For example, if it loses a connection to an SGD server.

You have one profile for each SGD server you connect to.

The available client settings are described in [Appendix C](#).

Editing Profiles

You can only edit profiles if your SGD Administrator has configured SGD to let you do this.

You can only edit profiles from a webtop. On your webtop, click the Edit button in the Applications area of the webtop, and then click the Client Settings tab.

You can only edit your own profiles, and you can only edit the profile for the SGD server you are currently connected to.

When you first edit a profile, the settings are the ones that your SGD Administrator has configured for you.

To restore a profile to the system default settings, click the Reset button.

Note – You must log out of SGD and log in again for changes to your profile to take effect.

Application Groups

Only an SGD Administrator can add an application to, or remove an application from, the list of applications that you can run. However, you can choose how and when those applications display on your webtop. You do this by creating groups.

Groups are useful for grouping similar applications together or for hiding applications you do not use very often. How you use groups is up to you.

▼ How To Create a Group

1. On the webtop, click the **Edit** button.

2. Click the **Edit Groups** tab.

3. Click the **Add New Group** button.

Type a name for the group.

In **Choose Your Content**, select the check boxes for the applications and documents you want to include in the group.

4. Set the **display options** for the group.

To hide the applications *and* the group so that they do not display on your webtop, you deselect the check box next to **I Want to See This Group on My Webtop When I Log In**.

To hide the contents of the group so that only the group name is displayed when you first log in, you deselect the check box next to **I Want to See the Contents of This Group When I Log in**.

FIGURE 1-16 Creating a New Group Using the Edit Groups tab

Name

Enter name:

Choose your content

Cash-o-Win Cust-o-dat Pers-o-dat
 Slide-o-Win Write-o-Win XClaim
 XFinance

Set your display options

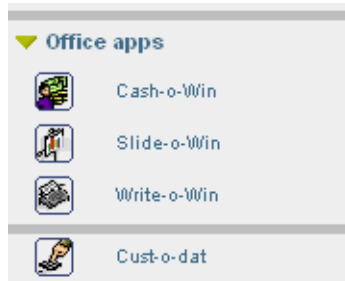
I want to see this group on my webtop when I log in
 I want to see the contents of this group when I log in

5. Click the **Save Group** button.

6. Click the **Update** button.

The names of the webtop groups you create are displayed on the webtop.

FIGURE 1-17 Group Displayed on a Webtop, Showing Group Contents



A separator line to show you which applications are in the group is also displayed.

7. Click the triangle to hide and show the applications in the group.

FIGURE 1-18 Group Displayed on a Webtop, Hiding Group Contents



You can add as many groups as you like. You can change or delete a group whenever you like. After making a change you must click Update.

Using SGD From Your Desktop Start or Launch Menu

You can use SGD from your desktop Start or Launch Menu. This is called [Integrated mode](#). When you use SGD in Integrated mode, the links for starting applications display in your desktop Start or Launch Menu, instead of on your webtop. This means you can run applications through SGD in the same way as applications installed on your computer.

▼ How to Add SGD to Your Desktop Start or Launch Menu

To add SGD to your desktop Start or Launch Menu, you usually have to perform an initial login to display a webtop, and then edit your profile.

1. Start a browser and go to the SGD login URL.

The SGD login URL is at `http://server.example.com/sgd`, where `server.example.com` is the name of the SGD server.

2. Log in and display a webtop.

3. Edit your profile as follows.

a. Click the Edit button in the Applications area of the webtop, and then click the Client Settings tab.

b. Select the Add Applications to Start Menu check box.

c. To start the SGD Client when you log in to your desktop, select the Connect on System Login check box.

d. (Optional) If you want the SGD Client to log you in automatically to SGD when it starts, select the Automatic Client Login check box.

Your SGD Administrator can tell you whether you can use automatic logins.

e. (Optional) Configure the proxy server settings.

Your SGD Administrator can tell you what proxy server settings to use.

f. Click Save.

4. Log out of SGD.

Working With the Start or Launch Menu

This section describes the how you do the following tasks using the desktop Start or Launch Menu.

- Logging in
- Running applications
- Printing
- Displaying a webtop
- Using application groups

Logging In

You log in to SGD by clicking the Login link on your desktop Start or Launch Menu. See [FIGURE 1-19](#).

FIGURE 1-19 Logging In Using the Desktop Start or Launch Menu

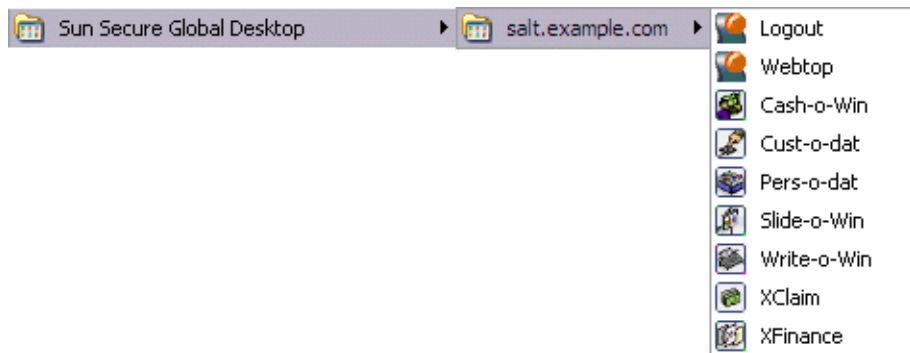


Note – If you log in to more than one SGD server, there is a Login link for each server in the Start or Launch Menu.

Once you have logged in to SGD, the Start or Launch Menu is updated with the links for the applications you can run through SGD, as shown in [FIGURE 1-20](#).

To use SGD in Integrated mode, you always log in using the Start or Launch Menu. If you start a browser and log in, your applications are not displayed in the Start or Launch Menu.

FIGURE 1-20 Webtop Content Links in the Desktop Start or Launch Menu



Displaying a Webtop

If you need to display a webtop, for example to be able to edit your profile, resume a suspended application or manage printing, you click the Webtop link in the Start or Launch Menu. The webtop is displayed in your default browser.

Running Applications

To start an application, you click its link on the Start or Launch Menu. To start another instance of the application, you click the link again.

Unlike the webtop, you cannot suspend and resume individual applications. Instead, when you log out of SGD, your running applications are either suspended or ended, depending on their resumability settings. See [“Suspending and Resuming Applications” on page 11](#). When you log in again, any suspended applications you have are resumed automatically.

See [“Using Applications” on page 9](#) for more information about running applications using SGD.

Printing

You cannot manage individual print jobs from the Start or Launch Menu and so print jobs go straight to the selected printer.

See [“Printing” on page 15](#) for more information about printing using SGD.

Using Application Groups

If you have arranged any of your webtop content to display in groups, those groups are also used in the Start or Launch Menu. If the group is configured to hide webtop content, the content does not display in the Start or Launch Menu.

Using My Desktop

My Desktop is a feature that enables you to log in and display a full-screen desktop application, without displaying your webtop.

My Desktop displays the desktop application configured for you by an SGD Administrator, for example, a Microsoft Windows desktop.

You start My Desktop by clicking the My Desktop link on the SGD web server Welcome page, at <http://server.example.com>. This link displays the SGD Login page. Once you have logged in, the My Desktop full-screen desktop application is displayed.

An alternative way to start My Desktop is by going to <http://server.example.com/sgd/mydesktop>.

After starting My Desktop, you can close the browser window.

Note – You cannot suspend or resume your My Desktop application. You must log out of the desktop application as normal.

Logging Out

The log out procedure varies, depending on whether you are using the SGD webtop or you are using SGD from the desktop Start or Launch Menu.

Logging Out of the SGD Webtop

Always log out of SGD before closing your browser.

Click the Logout button on your webtop and click OK when prompted for confirmation. See [FIGURE 1-21](#).

FIGURE 1-21 Log Out Button on the Webtop



Logging Out Using the Start or Launch Menu

To log out of SGD in Integrated mode, you click the Logout link on the Start or Launch Menu.

Installing the SGD Client Manually

To use Sun Secure Global Desktop (SGD) with a browser that does not have Java technology enabled, you must download the SGD Client manually and install it on your computer.

Installing the SGD Client

The SGD Client is usually installed automatically when you connect to an SGD server using a browser with Java technology enabled. Follow these instructions only if you want to install the SGD Client *manually*.

You do not need superuser (root) or administrator privileges to install the SGD Client.

On Microsoft Windows platforms, the SGD Client is installed in the `C:\Program Files\Sun\Secure Global Desktop Client` directory by default, but you can choose a different installation directory when you install the software. A shortcut for the SGD Client is added to the Windows Start Menu.

On UNIX and Linux platforms, the SGD Client is installed in the `$HOME/bin` directory by default, but you can choose a different installation directory when you install the software.

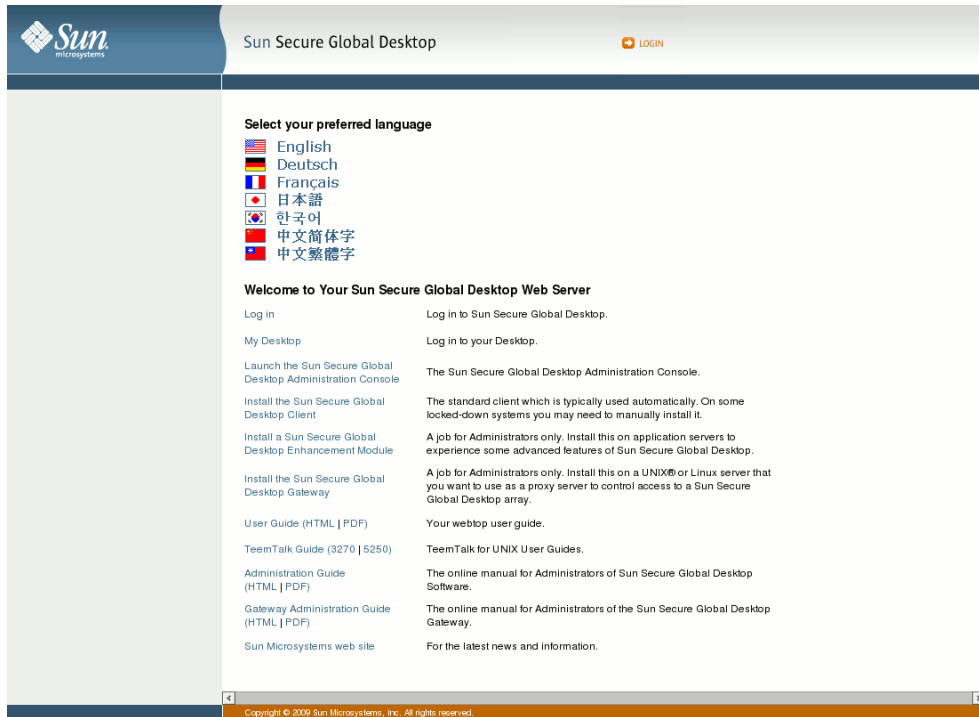
▼ How to Install the SGD Client Manually on Microsoft Windows Platforms

1. In a browser, go to an SGD web server.

For example, `http://server.example.com`.

The SGD web server Welcome page is displayed, as shown in [FIGURE A-1](#).

FIGURE A-1 SGD Welcome Page



2. (Optional) Select your preferred language.

Click one of the flags at the top of the Welcome page.

The Welcome page is displayed in the selected language.

3. Click **Install the Sun Secure Global Desktop Client**.

The Sun Secure Global Desktop Client page is displayed.

4. Download the SGD Client installation program.

Click Download the Secure Global Desktop Client for Microsoft Windows.

Save the installation program to a temporary directory on the PC.

The SGD Client installation program is `sgdcwin-lang.exe`, where *lang* is the selected language.

5. Change to the temporary directory and install the SGD Client.

Double-click `sgdcwin-lang.exe` and follow the instructions on the screen.

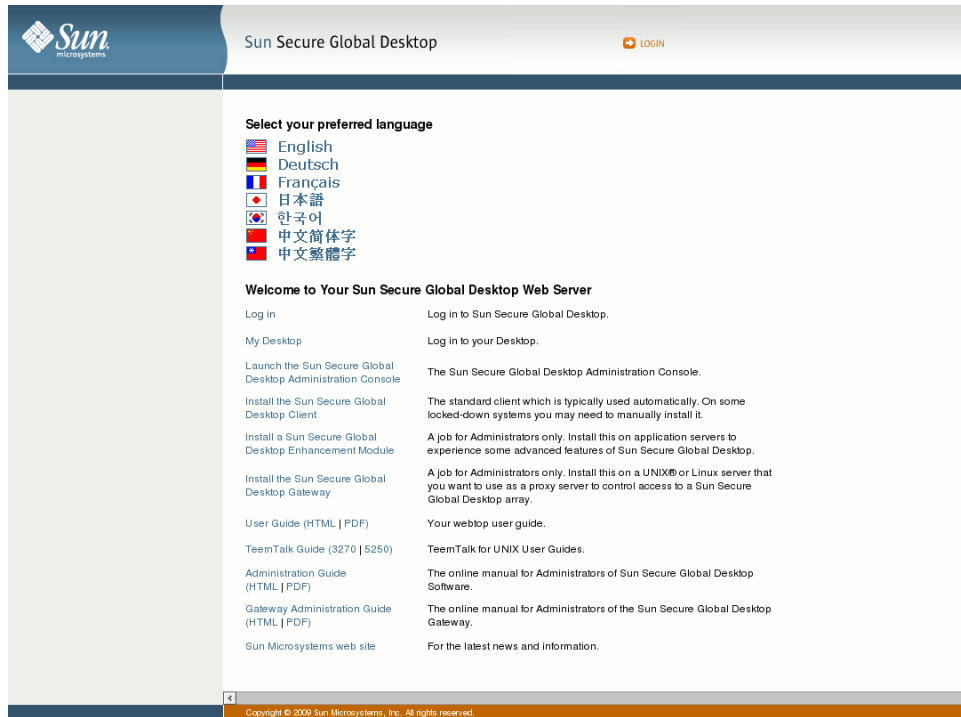
▼ How to Install the SGD Client Manually on Solaris OS and Linux Platforms

1. In a browser, go to an SGD web server.

For example, `http://server.example.com`

The SGD web server Welcome page is displayed, as shown in [FIGURE A-2](#).

FIGURE A-2 SGD Welcome Page



2. (Optional) Select your preferred language.

Click one of the flags at the top of the Welcome page.

The Welcome page is displayed in the selected language.

3. Click Install the Sun Secure Global Desktop Client.

The Sun Secure Global Desktop Client page is displayed.

4. Download the SGD Client tar file.

Click Download the Secure Global Desktop Client for *platform*, where *platform* is the operating system for your computer platform.

Save the tar file to a temporary directory on your computer.

Tar file names indicate a platform, as follows:

- `sgdci3so.tar` for Solaris™ Operating System (Solaris OS) on x86 platforms
- `sgdcspso.tar` for Solaris OS on SPARC® technology platforms
- `sgdci3li.tar` for Linux platforms

5. Change to the temporary directory and extract the tar file.

```
$ cd /tmpdir
$ tar xvf tarfile
```

6. Install the SGD Client.

```
$ sh sgdc/install
```

Follow the instructions on the screen.

Logging In Using the SGD Client

On UNIX and Linux platforms, you start the SGD Client with the `ttatcc` command.

On Microsoft Windows platforms, you can either start the SGD Client as part of the installation or click Start → Programs → Sun Secure Global Desktop → Login.

▼ How to Configure the SGD Client

The first time you start the SGD Client, it asks for the following information:

- The Uniform Resource Locator (URL) of the SGD server to which it connects. This is usually `http://server.example.com/sgd`, where *server.example.com* is the name of an SGD server.
- The proxy settings to use. The settings can be determined from your default browser, requiring Java technology, or you can type them in.

1. Start the SGD Client for the first time.

- On UNIX and Linux platforms:

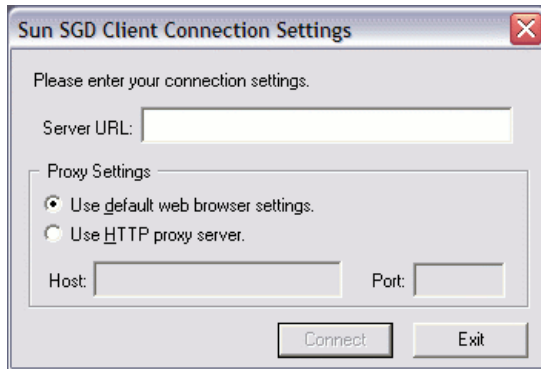
```
$ cd $HOME/bin
$ sh ttatcc
```

- On Windows platforms:

Click Start → Programs → Sun Secure Global Desktop → Login.

The Client Connection Settings dialog box is shown. See [FIGURE A-3](#).

FIGURE A-3 Client Connection Settings Dialog Box



2. Type in the Server URL for the SGD server.

3. Select a Proxy Settings option.

If you select the Use HTTP Proxy Server option, type the proxy server host name and port in the fields provided.

4. Click the Connect button to connect to the SGD server.

Your default browser is loaded and the SGD Login dialog is displayed.

5. Log in to SGD.

Type in your SGD user name and password at the SGD Login dialog. Click the Login button to log in to SGD.

6. Log out of SGD.

Click the Logout button on the SGD webtop menu bar.

The Client Connection settings you have entered are used by the SGD Client for any subsequent connections to this SGD server.

Advanced Configuration

This appendix includes configuration information for advanced users of Sun Secure Global Desktop (SGD).

The following advanced configuration topics are described:

- “Client Settings” on page 35
- “Printing” on page 37
- “Accessing the Drives on Your Computer” on page 38

Client Settings

You can change some of the following settings for your SGD Client:

- Login page Uniform Resource Locator (URL)
- Language
- Proxy settings
- Portable Document Format (PDF) viewer

To display the Client Settings tab, you click the Edit button in the Applications area of the webtop. You can only edit client settings for the SGD server you are currently connected to.

Note – Your SGD Administrator determines if you are allowed to change your own client settings.

Changing the Login Page URL

You use the Login URL setting to specify the location of the login page on the SGD server.

This client setting applies when you are logging in to SGD from the desktop Start or Launch Menu.

The Login URL is usually `http://server.example.com/sgd/index.jsp`, where *server.example.com* is the name of an SGD server.

Changing the Language

You use the Preferred Language setting to specify the language used for the login page and on-screen messages.

This client setting applies when you are using SGD from the desktop Start or Launch Menu.

Changing Proxy Settings

You use the settings in the Proxy section of the Client Settings tab to specify the proxy servers used by the SGD client.

The default setting is to use the same proxy server settings as your browser. But you can enter manual settings for an HTTP proxy server.

Specifying an Alternative PDF Viewer

When printing PDF files on UNIX, Linux, and Mac OS X platform computers, the PDF file is normally displayed using the default PDF viewer for the computer.

You can override this by specifying another PDF viewer for the Alternative PDF Viewer setting. Type in the application command for the alternative PDF viewer. If the application is not on your `PATH`, type the full path name for the application.

Printing

If you are using a UNIX, Linux, or Mac OS X computer, you can override the settings made by the SGD Administrator and configure printers on the computer.

Configuring Your Client Printers

Typically, your SGD Administrator configures the available client printers for you to use. However, if you are printing from a UNIX, Linux, or Mac OS X platform computer, you can override these settings and configure your own client printers. You do this by defining them in a client printer configuration file in your home directory at `$HOME/.tarantella/printerinfo.txt`. This file is not installed by default. You must create this file, or ask your SGD Administrator for a template file that you can install and edit.

The format of the printer configuration file is as follows:

```
[UNIX]
"printer_name" = "windows_driver" printer_type
"printer_name" = "windows_driver" printer_type...
```

`printer_name` is the name of the printer as it is known to the `lp` or `lpr` system on the computer.

`windows_driver` is the name of the printer driver to use when printing from a Microsoft Windows application server.

`printer_type` is the format to be used for the print job. The values can be PostScript, PCL, or Text.

An example of a client printer configuration file is as follows:

```
[UNIX]
"drafts" = "HP DeskJet 970Cxi" PCL
"salesprinter" = "HP LaserJet 5/5M" PostScript
```

This defines two client printers: `drafts` and `salesprinter`. You can then use the following command to print from a UNIX platform application to `salesprinter`:

```
$ lp -d salesprinter file
```

Accessing the Drives on Your Computer

Your SGD Administrator configures whether you can access the drives on your computer from applications running through SGD.

If you are using a UNIX, Linux, or Mac OS X platform computer, by default your home directory is mapped to a drive called "My Home." But you can configure the drives you want to use with applications. This is done by editing your client configuration file, `$HOME/.tarantella/native-cdm-config`. This file is automatically created when the SGD Client is installed. The file contains detailed instructions on how to create mapped drives.

The configuration file contains entries of the form `<path> <type> <label>`, where:

- `<path>` is the absolute path name of the client file system
- `<type>` is either `unknown`, `fixed`, `floppy`, `cdrom`, or `remote`
- `<label>` is the name used in the application session

Use a separate line for each drive and separate each of the fields with a space or a tab. If either the `<path>` or the `<label>` fields contains spaces or tabs, enclose the field in quotes.

You can use environment variables in the `<path>` or `<label>` fields. You delimit these with a dollar sign (`$`). To use a literal `$`, escape it with another `$`.

The following is an example configuration file.

```
[CDM]
$HOME$ fixed "My Home"
/tmp/$USER$ fixed Temp
"/mnt/win/My Documents" fixed "My Local Documents"
[/CDM]
```

Note – Changes to the configuration file only take effect when you log out and then log in to SGD.

The access rights for a mapped client drive are shown in brackets after the drive name: `(rw)` means read-write access, `(ro)` means read only access.

Profile Settings

This appendix describes the settings you can configure in a profile.

Description of Profile Settings

Each time the SGD Client starts it uses a *profile*. A profile is a group of configuration settings that control the SGD Client.

The following table lists the settings available in a profile, with a description of what they do.

If you are unsure about a setting, ask your SGD Administrator for help.

Setting	Description
Login URL	<p>The SGD Uniform Resource Locator (URL) to use for the profile. This is usually <code>http://server.example.com/sgd</code>, where <i>server.example.com</i> is the name of an SGD server.</p> <p>If you use a browser to display the SGD webtop, the URL is loaded automatically in your default browser so that you can log in and access your webtop.</p> <p>In Integrated mode, the URL is only loaded in your default browser if you need to log in to SGD.</p> <p>The default Login URL is <code>http://server.example.com/sgd/index.jsp</code>.</p>
Connect on System Login	<p>If enabled, the SGD Client is started automatically with this profile whenever you log in to your computer.</p> <p>If enabled, the SGD Client creates an application shortcut or symbolic link for itself in the startup folder of your desktop system.</p> <p>This is disabled by default.</p>
Add Applications to Start Menu	<p>Controls how you use SGD.</p> <p>If enabled, the applications you can run are displayed in the desktop Start or Launch Menu on your computer. This is called Integrated mode.</p> <p>If disabled, the applications you can run are displayed on a webtop in a browser.</p> <p>With Integrated mode, you cannot suspend and resume individual applications or pause and resume individual print jobs.</p> <p>This is disabled by default.</p>
Automatic Client Login	<p>If enabled, as soon as the SGD Client starts, it attempts to log you in automatically to SGD. Your Administrator can tell you whether automatic logins are being used.</p> <p>You can only enable this option if the Add Applications to Start Menu setting is enabled.</p> <p>This is disabled by default.</p>
Alternative PDF Viewer	<p>The application command for an alternative Portable Document Format (PDF) viewer to use with PDF printing.</p> <p>If the application is not on your <i>PATH</i>, type the full path to the application.</p> <p>This setting only applies to UNIX, Linux, and Mac OS X platform computers.</p>
Logging	<p>Controls the amount of information that is output to the SGD Client log file.</p> <p>The output is logged to a text file in the same directory as the SGD Client.</p> <p>The default is Errors only.</p>
Preferred Language	<p>The default language to use when the SGD Client is started from the command line. For example, when the SGD Client is in Integrated mode.</p> <p>The language selected is used for messages displayed by the SGD Client, the login dialog, and the webtop.</p> <p>The default is English.</p>

Setting	Description
Check for Local X Server	<p>If enabled, the SGD Client checks whether there is an X server running on the computer.</p> <p>Enabling this option can improve performance when launching X applications that are configured to display using an X server on the computer.</p> <p>This setting only applies to Windows computers.</p> <p>This setting is disabled by default.</p>
Proxy Settings	<p>Settings that control how the SGD Client determines what proxy servers to use.</p> <p>Use Default Web Browser Settings means use the proxy server settings configured in your default browser.</p> <p>Manual Proxy Settings enable you to define the proxy server settings in the profile. You can specify an Hypertext Transfer Protocol (HTTP) proxy server. If the proxy settings are determined from a browser, the settings are stored and used the next time the SGD Client starts.</p> <p>If Establish Proxy Settings on Session Start is enabled, the SGD Client obtains the proxy settings from the browser every time it starts. The stored proxy settings are not used. If Automatic Client Login is selected, the Establish Proxy Settings on Session Start setting is not available.</p> <p>By default, the Use Default Web Browser Settings check box is selected and the Establish Proxy Settings on Session Start check box is not selected.</p>
Connection Failure	<p>Settings that control what the SGD Client does if the connection to an SGD server is lost: Whether to always reconnect, to never reconnect or to ask you what to do.</p> <p>If the SGD Client reconnects, these settings control how many attempts are made to reconnect and the time in seconds between each attempt.</p> <p>If the SGD Client is unable to reconnect, the webtop session ends and any running applications are ended or suspended, depending on how they have been configured for you.</p> <p>The default settings are: Always Attempt to Reconnect, Number of Attempts: 6, and Interval: 10.</p>

Configuring Integrated Mode Operation

The following settings on the Client Settings tab are used for configuring Integrated mode operation of SGD:

- Connect on System Login
- Automatic Client Login
- Add Applications to Start Menu

See [“Using SGD From Your Desktop Start or Launch Menu”](#) on page 23 for more information.

Glossary

This chapter defines terms used with the Sun Secure Global Desktop (SGD) software.

A

application A program running on a server. SGD lets you access your applications using a browser on any computer.

B

browser Software you run on your computer to access SGD. For example, Microsoft Internet Explorer or Mozilla Firefox.

I

Integrated mode The mode of operation when you run SGD from the desktop Start or Launch Menu. Applications are started by clicking links in the Start or Launch Menu.

L

link Provides access to documents and applications on your webtop. Usually an icon with a label.

P

password A secret set of characters that, together with your user name, proves your identity to a server. You can have different passwords, and user names, on different servers.

profile A group of configuration settings that control the SGD Client.

S

server A computer, or software, that provides services to other computers. The SGD server enables you to see your webtop. Other servers might run the applications that are listed on your webtop.

SGD Administrators The people who can configure SGD, put links on user's webtops and set up applications.

SGD server The SGD software you log in to using your browser to see your webtop.

U

user name The unique name by which servers identify you. You can have different user names on different servers.

W

webtop The special web page you see when you log in to SGD. The webtop provides access to your applications.

Index

A

- Alternative PDF Viewer, specifying, 36
- anonymous users
 - closing the browser, 13
 - webtop username, 9
- Apple Macintosh mouse, single-button, 15
- applications
 - adding to the webtop, 8
 - authentication, 14
 - cancelling, 11
 - copying and pasting between, 14
 - error messages, 11
 - groups, 21
 - number of instances, 10
 - printing, 16, 17
 - resuming, 11
 - running, 9
 - running from the Start Menu, 10, 26
 - scaling the display, 13
 - starting, 9
 - suspending, 11
- Applications area, 8
- authentication
 - applications, 14

B

- browser
 - closing, 13
 - Java technology-enabled, 2
 - JavaScript-enabled, 2

C

- cancelling applications, 10
- client drives, accessing, 38
- client install, 29
- client printers, configuration, 37
- clipboard, 14
- copying, 14

D

- desktop Start Menu
 - application links, 10
 - using SGD from, 10, 23, 24, 41
- desktops, full screen, 26
- diagnostics information, 8

E

- error messages
 - when starting an application, 11

G

- glossary of terms, 43
- groups
 - creating, 21
- Guest user, 9

I

- Info button, 8
- Information area, 8
- Initial Connection dialog, 4
- Integrated mode, 23

J

Java technology-enabled web browser, 2
JavaScript, 2

L

language, changing, 36
logging out of SGD, 27
login URL, 2
 changing, 36

M

Menu bar, 7
My Desktop, 26

P

pasting, 14
PDF printing, 19
 changing the default viewer, 36
Potentially Unsafe Connection, 5
printing
 managing print jobs, 15
 PDF files, 19
 troubleshooting problems with, 20
 UNIX platform applications, 16
 user configuration, 37
 Windows applications, 17
Printing area, 8
proxy settings, changing, 36

R

resuming applications, 10, 11

S

scalable windows, 13
secure connections, 9
SGD
 adding links to the desktop Start Menu, 23
 glossary of terms, 43
 introduction, 1
 logging out, 27
 splash screen, 3
SGD Client
 manual install, 29
shared accounts
 closing the browser, 13
 webtop username, 9

splash screen, 3
SSL connections, 9
standard connections, 9
Start Menu, 10
suspending applications, 10, 11

U

Universal PDF Printer printer, 19
Universal PDF Viewer printer, 19
user names, 1, 9

W

webtop
 adding applications, 8
 application start links, 9
 Applications area, 8
 Information area, 8
 introduction, 6
 Menu bar, 7
 Printing area, 8
 user name, 9
Windows applications, 17
 NT domains, 10
Windows domains, 10